



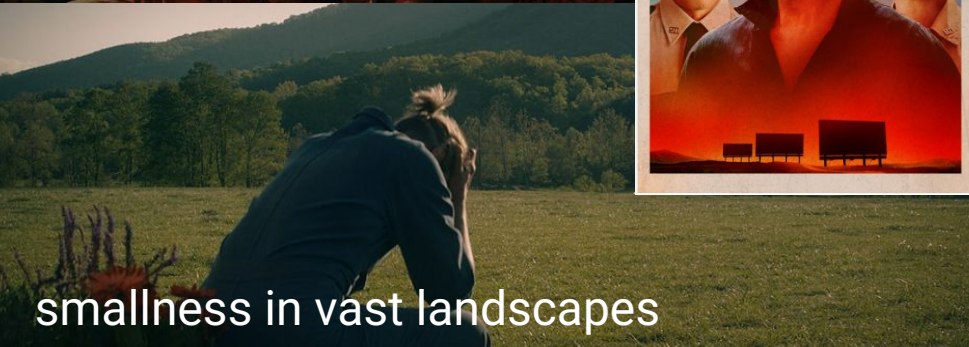
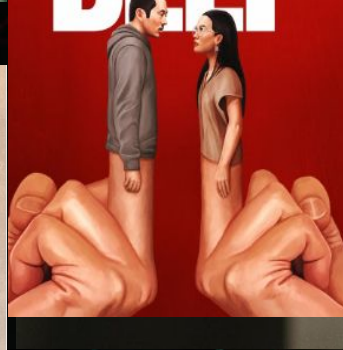
Comfort Food

A short film by Reena Dutt

AFI DWW+ class of 2026

LOGLINE

A widowed, Indian-American activist chef meets her mother-in-law, a redneck Chinese-American drunk. Will their battle to survive unbearable loss cause more pain...or stir up a healing pot of COMFORT FOOD?



TALENT PROTOTYPES

OUTER APPEARANCE: ANGER | BIGOTRY

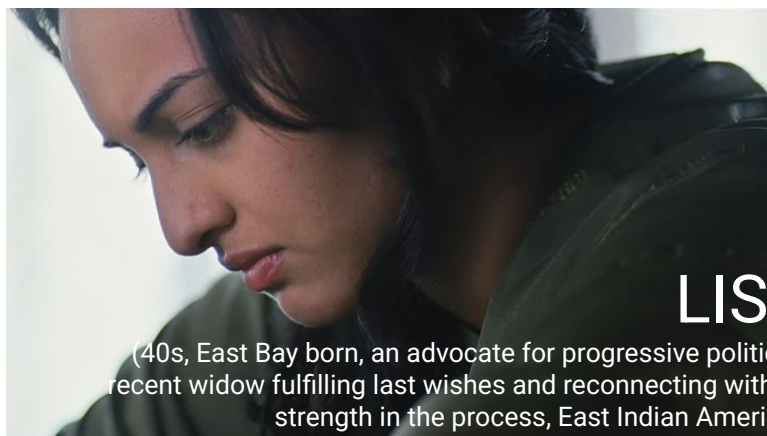


ANNIE

(60s-70s, Georgia-born, a recluse after a hard life, her proximity to whiteness curates her relationship to others, 3rd generation American of Chinese descent)

INNER SELF: DEPRESSION | SELF DESTRUCTION

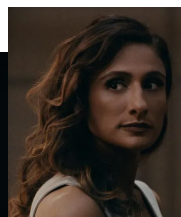
OUTER APPEARANCE: FOCUS | OBLIGATION

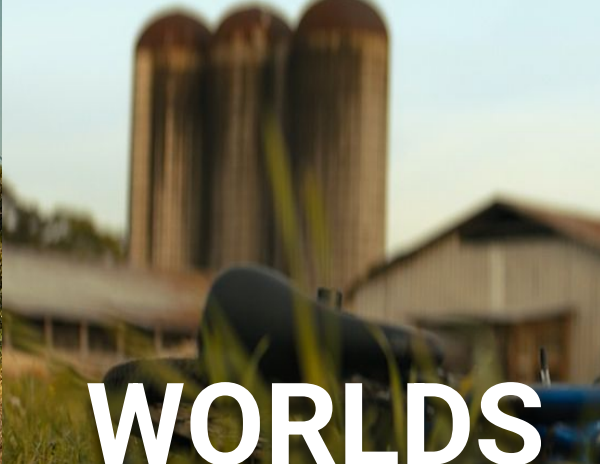


LISA

(40s, East Bay born, an advocate for progressive politics, a recent widow fulfilling last wishes and reconnecting with her strength in the process, East Indian American)

INNER SELF: CONFUSION | FORCED REBIRTH





EXTERIOR | earthy · dying farmland · open space · possibility

WORLDS



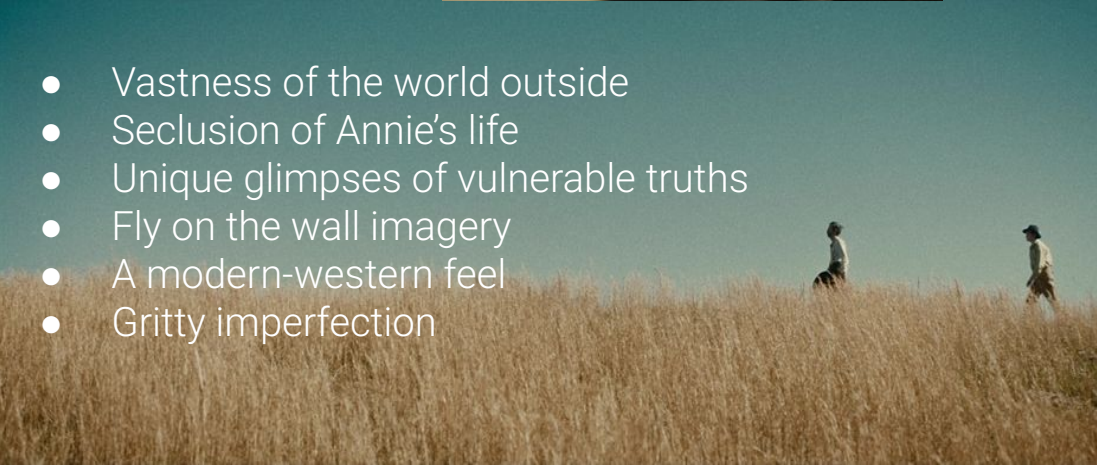
humid · claustrophobic · rich cluttered color · grotesque | INTERIOR



VISUAL LANGUAGE



- Vastness of the world outside
- Seclusion of Annie's life
- Unique glimpses of vulnerable truths
- Fly on the wall imagery
- A modern-western feel
- Gritty imperfection

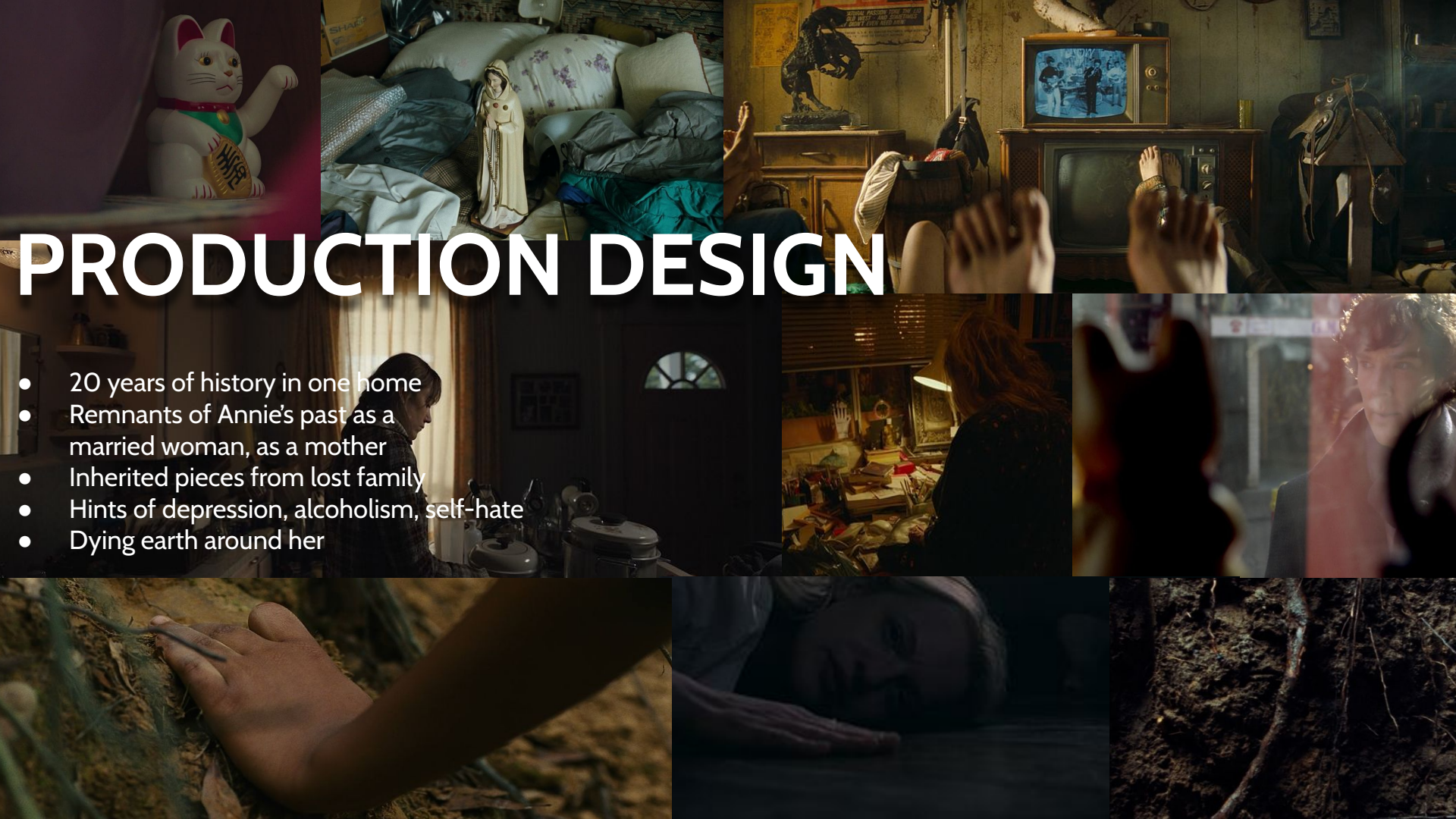




LIGHTING



- Use of natural light with elements of control
- Shadows speak volumes
- Bright/Open exteriors
- Interiors feel stale/suffocating



PRODUCTION DESIGN

- 20 years of history in one home
- Remnants of Annie's past as a married woman, as a mother
- Inherited pieces from lost family
- Hints of depression, alcoholism, self-hate
- Dying earth around her

COSTUME DESIGN: ANNIE

- A recluse
- Stripped of culture
- A Southerner



COSTUME DESIGN: LISA

- An Oakland activist
- Practical chef-aesthetic
- Hints of South Asian culture

